

**BRYSTON**

**BP1.5**  
**PHONO STAGE**  
**OWNER'S MANUAL**

# GENERAL INSTRUCTIONS

---

## Warranty Information:

---

Thank you for choosing a Bryston product. We welcome any suggestions you may have, or comments regarding the operation of your amplifier. We consider you, our customer, to be Bryston's most important resource, and your opinion is very much appreciated.

Bryston products are warranted to be free from manufacturing defects for a minimum of 20, (twenty), years from the original date of manufacture. This includes all parts, labor and one-way return shipping. This warranty covers the original owner and any subsequent owners. The warranty is retroactive for any Bryston product purchased within the last twenty years. Tam-

pering by anyone other than factory authorized personnel voids the warranty. Warranty service may be obtained by returning the unit to any authorized Bryston dealer or distributor. You may also contact the Bryston factory or national service offices directly at the location listed on the rear page of this manual.

Please keep the original box and all packing material. This will ensure the amplifier is protected in the unlikely event you have a problem and must return it for service. No warranty card is necessary to initiate your coverage. Please refer to the back page for more detailed warranty information.

---

## Bryston BP1.5 Description:

---

The Bryston BP1.5 Phono Stage is a high quality broadcast grade Phono Stage offering both Moving Magnet and Moving Coil cartridge step-up capabilities.

The BP1.5 comes with an separate outboard power supply to minimize noise and distortion.

The BP1.5 can be used without an additional power supply if you currently own a Bryston BP20 or BP25 Preamplifier. The outboard power supply for the BP20/25 can be utilized to power the BP1.5 as well with the supplied cable.

(See Figures 1 and 2 , Page 5)

---

## Input Capacitance Loading for MM Section:

---

The Moving-magnet input capacitance switch is located on the rear panel and consists of a four element DIP (Dual In Line) switch and eight high precision capacitors (4 capacitors for the left and 4 capacitors for the right channel). This ensures the correct amount of capacitance across the phono cartridge to provide accurate performance.

Each switch adds in one capacitor (47 pf).

Switches 1 to 4 add capacitance to BOTH LEFT and RIGHT inputs simultaneously . Any or all of the DIP switches may be activated ( placed in the upper position for On ) at one time or, in the lower position (Off), meaning no capacitance is placed across the phone inputs. As each capacitor is switched in the total capacitance increases cumulatively Total value for each channel is 188 pf per channel

(See Figure 4, Page 4)

---

**PLEASE REFER TO: "BRYSTON'S SAFETY MANUAL" FOR FURTHER OPERATING INSTRUCTIONS.**

# BRYSTON BP 1.5 MANUAL

---

## BP 1.5 Description

---

### Turn On Relay:

The BP1.5 utilizes an output shunting relay with approximately a 3 second delay at start-up to allow any system transient/thumps to settle out before connecting the signal. The front panel LED turns Red on power up and clicks to Green when status is confirmed.

### Mute Switch :

The Manual MUTE switch on front panel can be activated at any time. This switch mutes the output and is indicated by the front panel LED turning from Green to Red.

### Mute Relay :

When you power down the BP1.5, by turning off the outboard power supply the mute relay is activated and the LED will go from Green to Red. then Off This prevents any power supply decay artifacts from reaching the outputs.

### Preamplifier Gain:

BP1.5 includes two different amplifier modes to accommodate both MM (moving-magnet) and MC ( moving-coil) Phono Cartridges.

The Moving-Magnet mode comes factory set at 35dB of gain but can be adjusted with an inside jumper to 41dB gain. (See figure 3, Page 3)

The Moving-Coil mode adds an addition gain stage to the MM stage with a step-up transformer. This step-up transformer has adjustments for gain as well. It can be set for 22.5dB or 16.5dB of gain. It is factory set for 22.5dB as this will facilitate 90% of the MC cartridges available. The standard gain of 22.5dB accommodates cartridges with outputs of less than 40 ohms impedance. The 16.5dB of gain is for cartridges of 40 to 150 ohm output impedance.

Figure 3

# BRYSTON BP 1.5 MANUAL

---

## Bryston's BP1.5 Specifications:

---

**Frequency response:** (With Inverse RIAA filter)

MC mode; Between 20Hz to 20KHz less than  
+/- 0.5 dB.

MM mode; Between 20Hz to 20KHz less than  
+/- 0.1dB

**Rated output:**

5 Volts RMS

**High level sensitivity:**

MM mode; 5 mV

MC mode; 500uV

**Distortion:**

Less than .005% IM or THD, any frequency or  
combination of frequencies from 20Hz-20kHz at  
rated output

**Rated noise:** (with A Weighting filter)

MM mode; -80 dBA referred to an input of 5 mV  
RMS @ 1kHz

MC mode; -80 dBA referred to an input of 0.5  
mV RMS @ 1kHz

**Gain:**

MM mode; 35 dB or 41 dB (internally change-  
able). Factory set gain; 35dB

MC mode; 51.5 dB , 57.5 dB or 63.5 dB  
(internally changeable). Factory set gain; 57.5  
dB

**Features:**

1 pair Power supply input and outputs

1 pair RCA inputs and outputs

**Dimensions:**

17 x 7.2 x 1.75 inches

43.2 x 18.3 x 4.5 Cm

**Weight:**

5.1 lbs, 2.3 Kg

**Options:**

19 inch faceplate

19 inch Rack Mount Ears

Silver faceplate

Figure 4

# BRYSTON BP 1.5 MANUAL

---

## Typical Hookup:

---

Shown below is a typical hookup using a BP 1.5 Phono Preamplifier with and without a Bryston BP 25 Preamplifier.

Figure 1 and 2

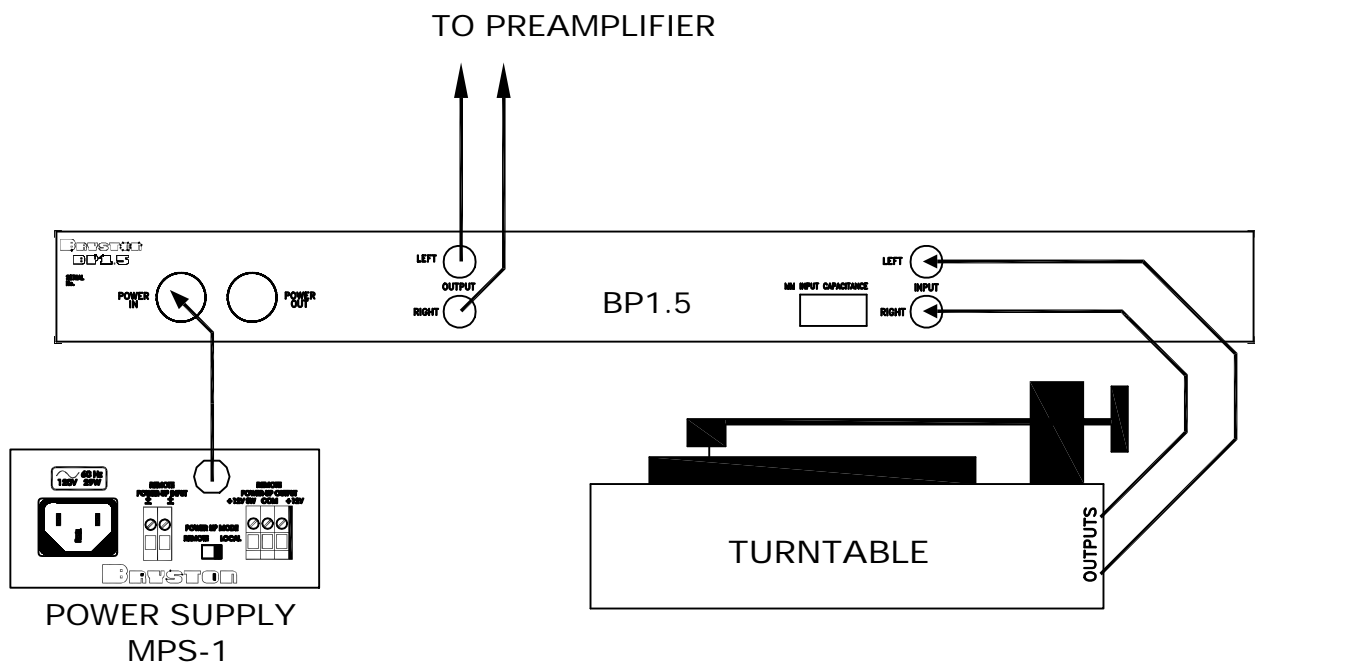


FIGURE 1

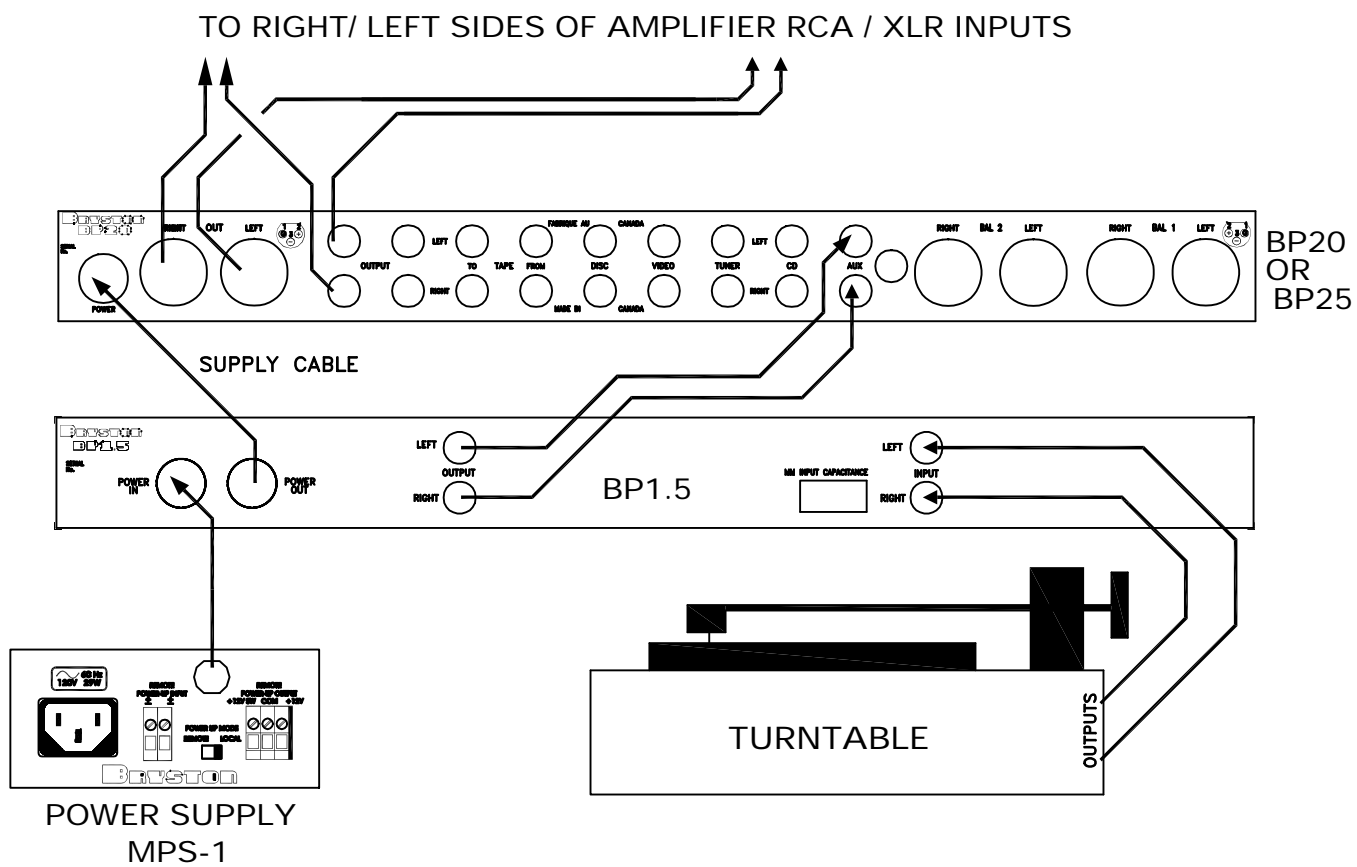


FIGURE 2

# INSTRUCTION FOR SETTING DIFFERENT GAIN BY USING JUMPERS

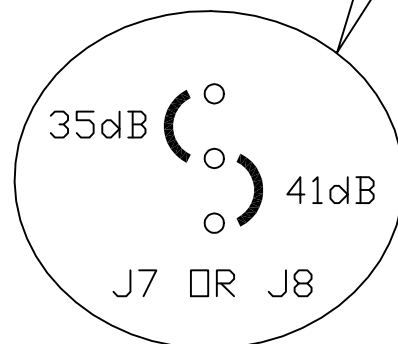
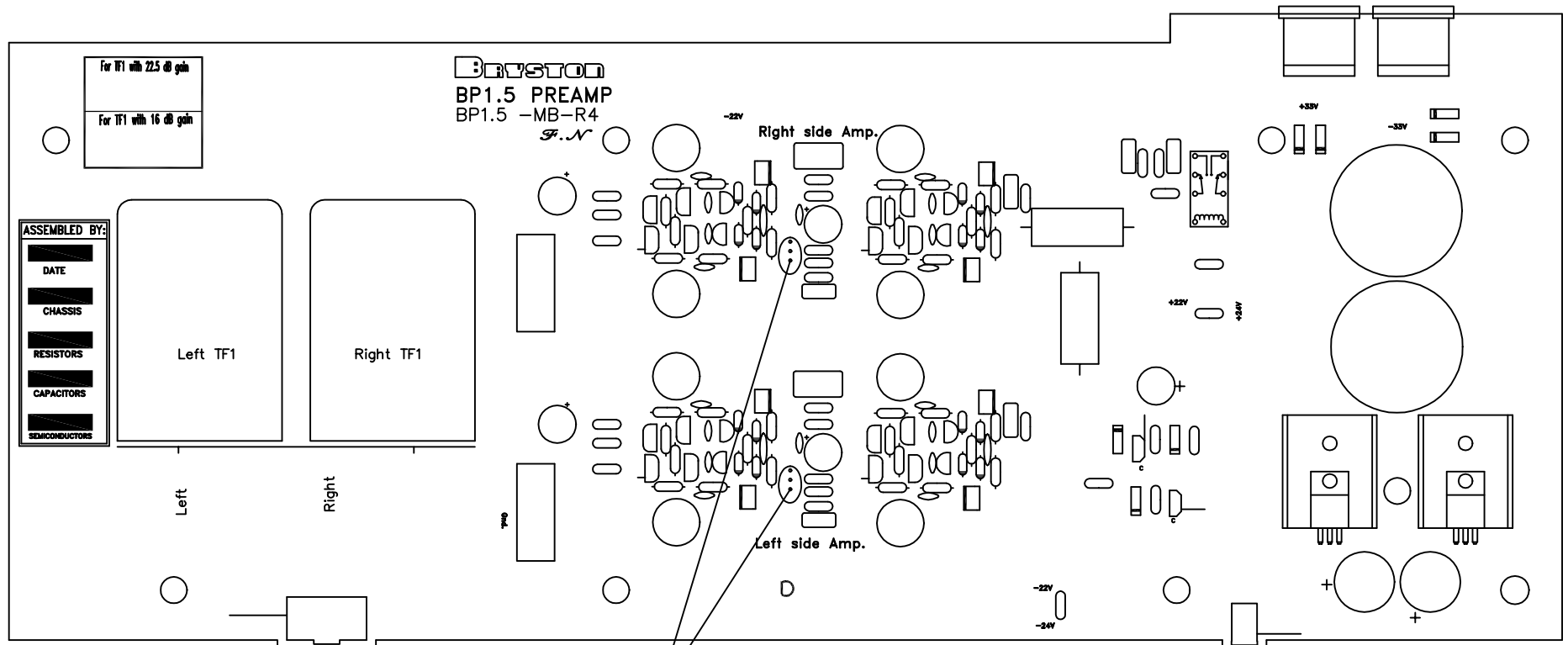
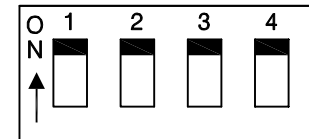


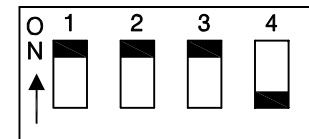
FIGURE 3

# INSTRUCTION FOR MM INPUT CAPACITANCE LOADING SWITCH

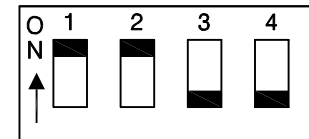
Maximum input capacitance is 188pf



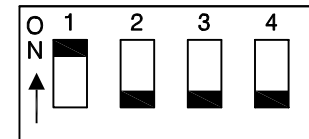
Total input capacitance is 141pf



Total input capacitance is 94pf



Total input capacitance is 47pf



There is no input capacitance in this case

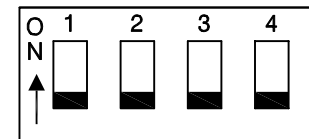


FIGURE 4



## IMPORTANT SAFETY INSTRUCTIONS



The lightning flash with arrowhead symbol within an equilateral triangle, is intended to alert the user to the presence of un-insulated "dangerous voltage " within the product's enclosure that may be of sufficient magnitude to constitute a risk of electric shock to persons.



The exclamation point within an equilateral triangle is intended to alert the user to the presence of important operating and maintenance (servicing) instructions in the literature accompanying the product.

1. Read these instructions.
2. Keep these instructions.
3. Heed all warnings.
4. Follow all instructions.
5. Do not use this apparatus near water.
6. Clean only with dry cloth.
7. Do not block any ventilation openings. Install in accordance with the manufacturer's instructions.
8. Do not install near any heat sources such as radiators, heat registers, stoves, or other apparatus (including amplifiers) that produce heat.
9. Do not defeat the safety purpose of the polarized or grounding-type plug. A polarized plug has two blades with one wider than the other. A grounding type plug has two blades and a third grounding prong. The wide blade or the third prong are provided for your safety. If the provided plug does not fit into your outlet, consult an electrician for replacement of the obsolete outlet.
10. Protect the power cord from being walked on or pinched particularly at plugs, convenience receptacles, and the point where they exit from the apparatus.
11. Only use attachments/accessories specified by the manufacturer.
12. Use only with the cart, stand, tripod, bracket, or table specified by the manufacturer, or sold with the apparatus. When a cart is used use caution when moving the cart/apparatus combination to avoid injury from tip-over.
13. Unplug this apparatus during lightning storms or when unused for long periods of time.
14. Refer all servicing to qualified service personnel. Servicing is required when the apparatus has been damaged in any way, such as power-supply cord or plug is damaged, liquid has been spilled or objects have fallen into the apparatus, the apparatus has been exposed to rain or moisture, does not operate normally, or has been dropped.



**WARNING: TO REDUCE THE RISK OF FIRE OR ELECTRIC SHOCK, DO NOT EXPOSE THIS APPARATUS TO RAIN OR MOISTURE.**

**DO NOT EXPOSE THIS EQUIPMENT TO DRIPPING OR SPLASHING AND ENSURE THAT NO OBJECTS FILLED WITH LIQUIDS, SUCH AS VASES, ARE PLACED ON THE EQUIPMENT.**

**TO COMPLETELY DISCONNECT THIS EQUIPMENT FROM THE AC MAINS, DISCONNECT THE POWER SUPPLY CORD PLUG FROM THE AC RECEPTACLE.**

**THE MAINS PLUG OF THE POWER SUPPLY CORD SHALL REMAIN READILY OPERABLE.**

## BRYSTON LIMITED WARRANTY

Bryston analog audio circuits are warranted to be free from manufacturing defects for twenty (20) years from the original date of manufacture. The warranty includes parts and labour.

Bryston Digital circuits and cables are warranted for five years from the original date of manufacture. The warranty includes parts and labour.

Bryston products having motorized moving parts, excluding motorized volume controls, are warranted for three years from the original date of manufacture. The warranty includes parts and labour.

Bryston will remedy the problem by repair or replacement, as we deem necessary, to restore the product to full performance. Bryston will pay shipping costs one way (usually the return portion) during the first three years of warranty coverage.

In the event of a defect or malfunction, contact Bryston's repair centers for return authorization. Products must be returned using original packaging material only. Packing material may be purchased from Bryston if necessary. This warranty is considered void if the defect, malfunction or failure of the product or any component part was caused by damage (not resulting from a defect or malfunction) or abuse while in the possession of the customer. Tampering by persons other than factory authorized service personnel or failure to fully comply with Bryston operating instructions voids the warranty. This warranty gives you specific legal rights and you may also have other rights which may vary from province to province and country to country.

As of 2006-02-22 Bryston will only warranty Bryston products purchased through authorized Bryston dealers. Bryston products with a date code of 0608 or higher (date code format is "yyww", where "yy" is the two least significant digits of the year and "ww" is the week of the year) must be accompanied by a copy of the bill-of-sale from a Bryston authorized dealer to qualify for warranty service. The warranty is transferable from the original owner to a subsequent owner as long as a copy of the bill-of-sale from the original authorized Bryston dealer accompanies the re-sale. The copy of the bill of sale to any subsequent owner need ONLY include the Name of the Bryston Authorized Dealer and the Model and Serial number of the Bryston product. The warranty will only be honored in the country of the original purchase unless otherwise pre-authorized by Bryston.

### **BRYSTON SERVICE in CANADA:**

Postal address: **PO. BOX 2170, Stn. Main  
PETERBOROUGH, ONTARIO  
CANADA K9J 7Y4**

Courier address: **677 NEAL DRIVE  
PETERBOROUGH, ONTARIO  
CANADA K9J 6X7**

PHONE: 705-742-5325  
FAX: 705-742-0882  
E-mail: [cdnser@bryston.ca](mailto:cdnser@bryston.ca)

### **BRYSTON SERVICE in the USA:**

**79 COVENTRY ST., Suite 5  
NEWPORT, VERMONT  
U.S.A. 05855-2100**

PHONE: 802-334-1201  
FAX: 802-334-6658  
E-mail: [usaser@bryston.ca](mailto:usaser@bryston.ca)

### **BRYSTON SERVICE outside Canada and the USA:**

contact your local distributor or

CHECK OUR WEB SITE:  
E-MAIL BRYSTON DIRECTLY:  
FAX BRYSTON DIRECTLY:  
PHONE BRYSTON DIRECTLY:

[www.bryston.ca](http://www.bryston.ca)  
[cdnser@bryston.ca](mailto:cdnser@bryston.ca)  
01-705-742-0882  
01-705-742-5325

**Bryston Ltd., Peterborough, Ontario, Canada**

BP1pt5\_MANUAL\_20060324